

## When and where does abuse take place?



You can be abused by anybody, someone you know, someone supporting you or a stranger.



Abuse or neglect can happen any number of times and it can take place anywhere.



If any of these things happen to you, your friends, or someone you know in Knowsley, you should tell us or tell someone you trust, and they can report it for you.



You can tell us about a safeguarding concern online:

[Knowsley Council Website - Safeguarding Adults](#)



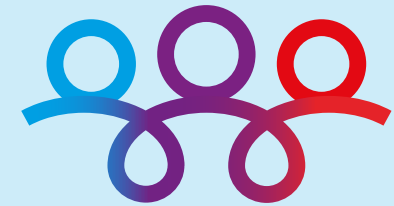
Or you can phone Adults Social Care Multi Agency Safeguarding Hub (MASH) on 0151 443 2600



In an emergency always ring 999.



For more information, please see the [KSAB website.](#)



**KNOWSLEY**  
**SAFEGUARDING**  
**ADULTS BOARD**

PREVENTION THROUGH PARTNERSHIP



## What is safeguarding?



Safeguarding is keeping people safe from abuse or neglect.

Produced in partnership with



## What is abuse and neglect?



**Abuse/neglect** is when someone hurts you or treats you badly or fails to provide care

for you. Abuse and neglect are always wrong and should never happen.

## What are types of abuse?



**Physical abuse** includes shaking, hitting, kicking, pushing, restraint

or misuse of medication.



**Neglect** is not getting the help, food or care you need.

**Self-neglect** is when you are not looking after yourself or not accepting help offered to you.



**Financial abuse** is about other people stealing money or things you own, not

letting you have money or telling you what to spend it on.



**Domestic abuse** is any form of abuse from any

family members over age of 16, partners or ex-partners.



**Sexual abuse** is unwanted sexual contact such as touching or

kissing, taking or sending sexual pictures or making you do things that you don't want to do.



**Emotional or psychological abuse** is shouting, making threats, online

bullying such as social media.



**Organisational abuse** is about poor care and support or being

neglected by someone paid to care or support you.



**Modern Slavery** can be being forced to work without being paid

or not being paid enough and can include other types of abuse.



**Discrimination** is about any type of abuse because of

disability, age, ethnicity, gender, religion, or sexuality.